

# State of Wyoming Corner Record

(In compliance with the **CORNER PERPETUATION AND FILING ACT**, Wyoming Statutes, 1977 Section 36-11-101, et. seq., and the Rules and Regulations of the Board of Professional Engineers and Professional Land Surveyors)

Reverse side of this form may be used if more space is needed.

Record of original survey and citation of source of historical information (if corner is lost or obliterated). Description of corner monumentation evidence found and/or monument and accessories established to perpetuate the location of this corner. Sketch of relative location of monument, accessories, and reference points with course and distance to adjacent corner(s) (if determined in this survey). Method and rationale for reestablishment of lost or obliterated corner.

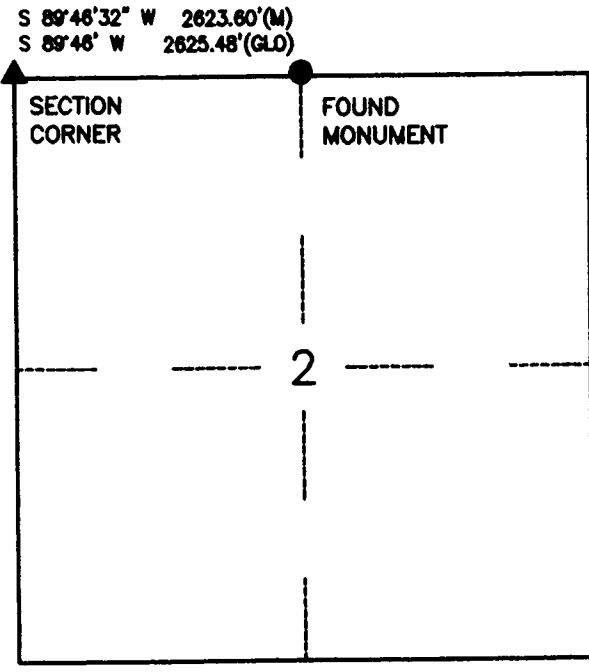
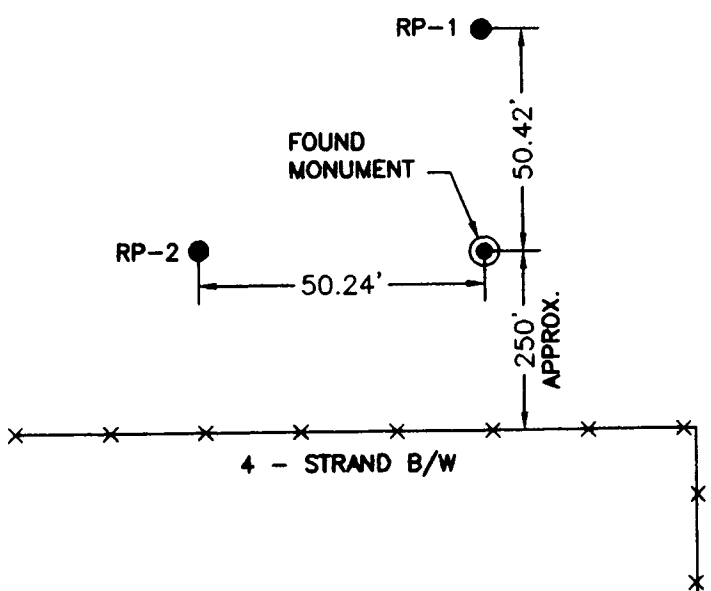
**FOUND:** 3" BRASS CAP ON IRON PIPE APPROPRIATELY STAMPED, SEE MONUMENT INSCRIPTION.

**GLO RECORD:** SET AN IRON POST, 3 FT. LONG 1 IN. DIA. 27 INS. IN THE GROUND WITH ORIGINAL STONE DEPOSITED ALONGSIDE FOR THE 1/4 SEC. COR. OF SECS. 2 AND 35 WITH BRASS CAP

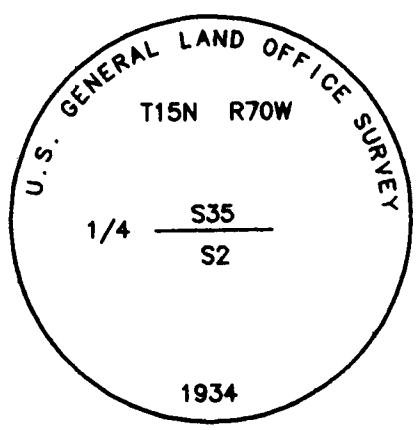
**SET:** NONE

**REFERENCES:** 2 - 5/8" DIA. BY 24" LONG REBAR WITH 1 1/2" ALUMINUM CAP STAMPED RP-1, RP-2, PLS 566

## Reference Locations



## Monument Inscription



## Monument Location

Date of Field Work: 9/16/99 Office Reference: 3174

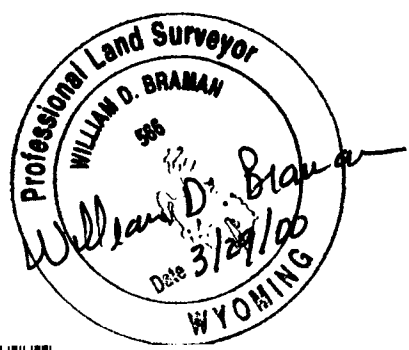
## Cross Index Plat

	1	2	3	4	5	6	7	8	9	10	11	12	13	14	15	16	17	18	19	20	21	22	23	24	25	
A																										
B																										
C		6	5	4	3	2	1																			
D																										
E																										
F																										
G																										
H																										
J																										
K																										
L																										
M																										
N																										
O																										
P																										
Q																										
R																										
S																										
T																										
U																										
V																										
W																										
X																										
Y																										
Z																										
	1	2	3	4	5	6	7	8	9	10	11	12	13	14	15	16	17	18	19	20	21	22	23	24	25	

Firm/Agency, Address  
 INTERMOUNTAIN PROFESSIONAL SERVICES  
 5801 OSAGE AVENUE  
 CHEYENNE, WYOMING 82009  
 Ph: (307) 632-3138  
 Fax: (307) 632-3194

This corner record was prepared by me or under my direction and supervision.

**SEAL & SIGNATURE**



RECORDED 3/31/2000 AT 10:05 AM REC# 271389 BK# 1550 PG# 629  
 DEBRA K. LATHROP, CLERK OF LARAMIE COUNTY, WY PAGE 1 OF 1

Corner Name 1/4 CORNER Section 2, T 14 N, R 70 W, 6th P.M.  
 County: LARAMIE Wyoming

Cross-Index No.: A-19